

High performance end mills for machining dental workpiece materials such as zirconium oxide, titanium alloys, plastics and cobalt/chrome



END MILL SERIES FOR DENTAL WORKPIECE MATERIALS

MSTAR* / *CRN* / *DF

■ Features

1 MSTAR Solid Carbide End Mill Series

PVD-coated end mills for general machining. The innovative coating and cutting edge geometry allows secure and reliable machining of dental workpiece materials such as cobalt/chrome and titanium alloys.



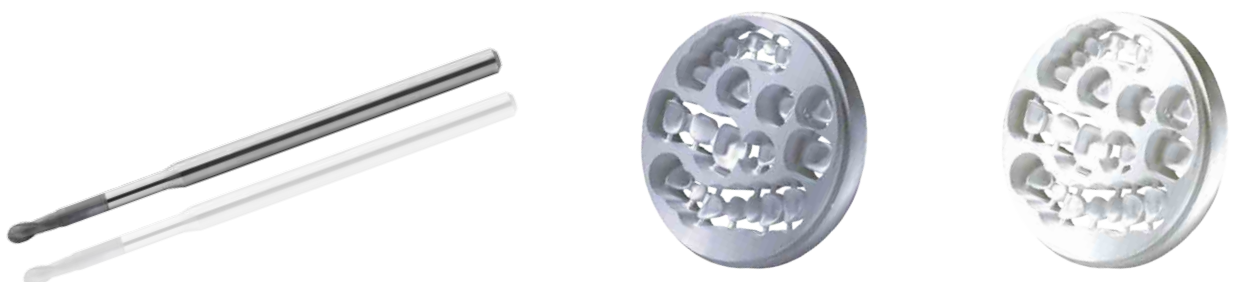
2 CRN Solid Carbide End Mill Series

CRN-coated end mills for general machining of zirconium oxide and plastics. The extremely smooth coating combined with long tool life and high cutting edge sharpness guarantees burr free machining of blanks.



3 DF Solid Carbide End Mill Series

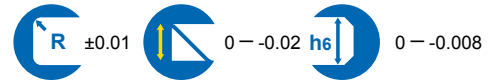
DF-Diamond coated end mills for machining zirconium oxide. The newly developed diamond coating offers long tool life compared to conventionally coated tools.



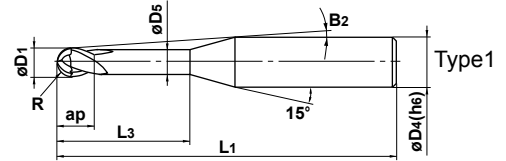
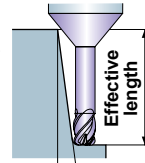
MSTAR END MILLS

MS2XLB

2 flutes, Ball nose, Long Neck



Effective length for inclined angle



Ball nose end mill with PVD-coating for cobalt/chrome and titanium alloys

Order Number	Radius of Ball Nose	Dia.	Length of Cut	Neck Length	Neck Dia.	Cutting Edge to Shank Angle	Overall Length	Shank Dia.	No. of Flutes	Stock	Type	Effective length for inclined angle			
	R	D1	ap	L3	D5	B2	L1	D4	N			30'	1°	2°	3°
MS2XLBR00500N050	0.5	1	1	5	0.94	8.2°	50	4	2	●	1	5.3	5.5	6	6.4
R0050N050S06	0.5	1	1	5	0.94	10.1°	50	6	2	●	1	5.3	5.5	6	6.4
R050N080	0.5	1	1	8	0.94	6.4°	50	4	2	●	1	8.4	8.8	9.4	10.2
R050N080S06	0.5	1	1	8	0.94	8.3°	50	6	2	●	1	8.4	8.8	9.4	10.2
R0050N100	0.5	1	1	10	0.94	5.6°	50	4	2	●	1	10.5	10.9	11.7	12.6
R0050N100S06	0.5	1	1	10	0.94	7.5°	50	6	2	●	1	10.5	10.9	11.7	12.6
R0050N120	0.5	1	1	12	0.94	5°	50	4	2	●	1	12.6	13.1	14	15.1
R0050N120S06	0.5	1	1	12	0.94	6.8°	55	6	2	●	1	12.6	13.1	14	15.1
R0050N140	0.5	1	1	14	0.94	4.5°	50	4	2	●	1	14.7	15.2	16.3	17.6
R0050N160	0.5	1	1	16	0.94	4.1°	55	4	2	●	1	16.8	17.4	18.6	20.1
R0050N160S06	0.5	1	1	16	0.94	5.7°	60	6	2	●	1	16.8	17.4	18.6	20.1
R0100N100	1	2	2	10	1.9	4.5°	50	4	2	●	1	10.4	10.8	11.5	12.4
R0100N100S06	1	2	2	10	1.9	6.9°	50	6	2	●	1	10.4	10.8	11.5	12.4
R0100N120	1	2	2	12	1.9	3.9°	50	4	2	●	1	12.5	12.9	13.8	14.9
R0100N120S06	1	2	2	12	1.9	6.1°	55	6	2	●	1	12.5	12.9	13.8	14.9
R0100N140	1	2	2	14	1.9	3.4°	50	4	2	●	1	14.6	15.1	16.1	17.4
R0100N140S06	1	2	2	14	1.9	5.6°	55	6	2	●	1	14.6	15.1	16.1	17.4
R0100N160	1	2	2	16	1.9	3.1°	55	4	2	●	1	16.7	17.2	18.4	19.9
R0100N160S06	1	2	2	16	1.9	5.1°	60	6	2	●	1	16.7	17.2	18.4	19.9
R0100N180	1	2	2	18	1.9	2.8°	55	4	2	●	1	18.7	19.4	20.7	*
R0100N180S06	1	2	2	18	1.9	4.7°	60	6	2	●	1	18.7	19.4	20.7	22.3
R0100N200	1	2	2	20	1.9	2.5°	60	4	2	●	1	20.8	21.5	23	*
R0100N200S06	1	2	2	20	1.9	4.3°	60	6	2	●	1	20.8	21.5	23	24.8
R0125N100S06	1.25	2.5	2.5	10	2.4	6.5°	50	6	2	●	1	10.4	10.8	11.5	12.3
R0125N125S06	1.25	2.5	2.5	12.5	2.4	5.6°	50	6	2	●	1	13	13.5	14.4	15.4
R0125N160S06	1.25	2.5	2.5	16	2.4	4.7°	60	6	2	●	1	16.7	17.2	18.4	19.8
R0125N200S06	1.25	2.5	2.5	20	2.4	4°	60	6	2	●	1	20.8	21.5	23	24.8
R0150N100	1.5	3	3	10	2.9	6°	60	6	2	●	1	10.4	10.8	11.5	12.3
R0150N120	1.5	3	3	12	2.9	5.3°	60	6	2	●	1	12.5	12.9	13.8	14.8
R0150N140	1.5	3	3	14	2.9	4.7°	60	6	2	●	1	14.6	15	16.1	17.3
R0150N160	1.5	3	3	16	2.9	4.3°	60	6	2	●	1	16.6	17.2	18.4	19.7
R0150N200	1.5	3	3	20	2.9	3.6°	70	6	2	●	1	20.8	21.5	23	24.7

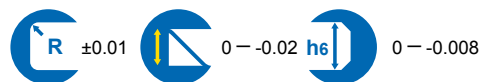
* No interference

● : Inventory maintained.

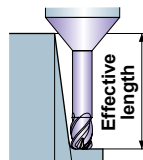
CRN END MILLS

CRN2XLB

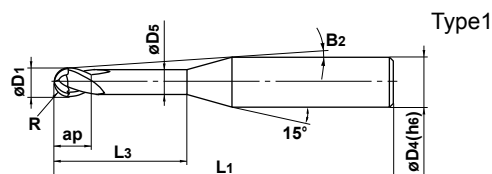
2 flutes, Ball nose, Long Neck



Effective length for inclined angle



Inclined angle



Ball nose end mill with CrN-coating for zirconium oxide and plastics

Order Number	Radius of Ball Nose	Dia.	Length of Cut	Neck Length	Neck Dia.	Cutting Edge to Shank Angle	Overall Length	Shank Dia.	No. of Flutes	Stock	Type	Effective length for inclined angle			
	R	D1	ap	L3	D5	B2	L1	D4	N			30'	1°	2°	3°
CRN2XLB R0050N100S04	0.5	1	1	10	0.94	5.6°	50	4	2	●	1	10.5	10.9	11.7	12.6
R0050N100S06	0.5	1	1	10	0.94	7.5°	50	6	2	●	1	10.5	10.9	11.7	12.6
R0050N120S04	0.5	1	1	12	0.94	5°	50	4	2	●	1	12.6	13.1	14	15.1
R0050N120S06	0.5	1	1	12	0.94	6.8°	50	6	2	●	1	12.6	13.1	14	15.1
R0050N140S04	0.5	1	1	14	0.94	4.5°	50	4	2	●	1	14.7	15.2	16.3	17.6
R0050N140S06	0.5	1	1	14	0.94	6.2°	55	6	2	●	1	14.7	15.2	16.3	17.6
R0050N160S04	0.5	1	1	16	0.94	4.1°	55	4	2	●	1	16.8	17.4	18.6	20.1
R0050N160S06	0.5	1	1	16	0.94	5.7°	55	6	2	●	1	16.8	17.4	18.6	20.1
R0100N100S04	1	2	2	10	1.90	4.5°	50	4	2	●	1	18.8	19.5	20.9	22.5
R0100N100S06	1	2	2	10	1.90	6.9°	50	6	2	●	1	18.8	19.5	20.9	22.5
R0100N120S04	1	2	2	12	1.90	3.9°	50	4	2	●	1	20.9	21.6	23.2	*
R0100N120S06	1	2	2	12	1.90	6.1°	50	6	2	●	1	20.9	21.6	23.2	25
R0100N140S04	1	2	2	14	1.90	3.4°	50	4	2	●	1	8.3	8.7	9.2	9.9
R0100N140S06	1	2	2	14	1.90	5.6°	55	6	2	●	1	8.3	8.7	9.2	9.9
R0100N160S04	1	2	2	16	1.90	3.1°	55	4	2	●	1	10.4	10.8	11.5	12.4
R0100N160S06	1	2	2	16	1.90	5.1°	55	6	2	●	1	10.4	10.8	11.5	12.4
R0100N200S04	1	2	2	20	1.90	2.5°	60	4	2	●	1	12.5	12.9	13.8	14.9
R0100N200S06	1	2	2	20	1.90	4.3°	60	6	2	●	1	12.5	12.9	13.8	14.9
R0150N160S06	1.5	3	3	16	2.90	4.3°	60	6	2	●	1	16.7	17.2	18.4	19.9
R0150N250S06	1.5	3	3	25	2.90	3°	70	6	2	●	1	16.7	17.2	18.4	19.9

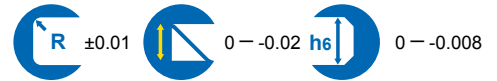
* No interference

● : Inventory maintained.

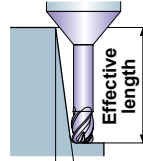
DF END MILLS

DF2XLB

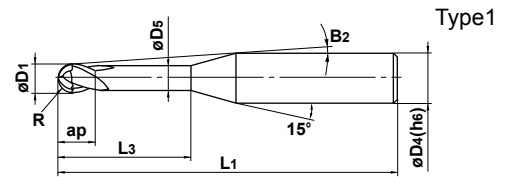
2 flutes, Ball nose, Long Neck



Effective length for inclined angle



Inclined angle



Ball nose end mill with CVD DF-Diamond coating for zirconium.

Order Number	Radius of Ball Nose	Dia.	Length of Cut	Neck Length	Neck Dia.	Cutting Edge to Shank Angle	Overall Length	Shank Dia.	No. of Flutes	Stock	Type	Effective length for inclined angle			
	R	D1	ap	L3	D5	B2	L1	D4	N			30°	1°	2°	3°
DF2XLB R0050N100	0.5	1	1.5	10	0.94	5.2°	60	4	2	●	1	10.5	11	12	13.3
R0050N120	0.5	1	1.5	12	0.94	4.6°	60	4	2	●	1	12.6	13.2	14.4	15.9
R0050N200	0.5	1	1.5	20	0.94	3.3°	80	4	2	●	1	21	21.9	24	26.6
R0100N100	1	2	3	10	1.9	4.2°	60	4	2	●	1	10.4	10.9	11.8	13
R0100N120	1	2	3	12	1.9	3.7°	60	4	2	●	1	12.5	13	14.2	15.7
R0100N160	1	2	3	16	1.9	2.9°	80	4	2	●	1	16.7	17.4	19	*
R0100N200	1	2	3	20	1.9	2.5°	80	4	2	●	1	20.9	21.8	23.8	*
R0150N160	1.5	3	4.5	16	2.9	1.7°	80	4	2	●	1	16.7	17.3	*	*
R0150N250	1.5	3	4.5	25	2.9	1.2°	80	4	2	●	1	26.1	27.2	*	*

* No interference

● : Inventory maintained.