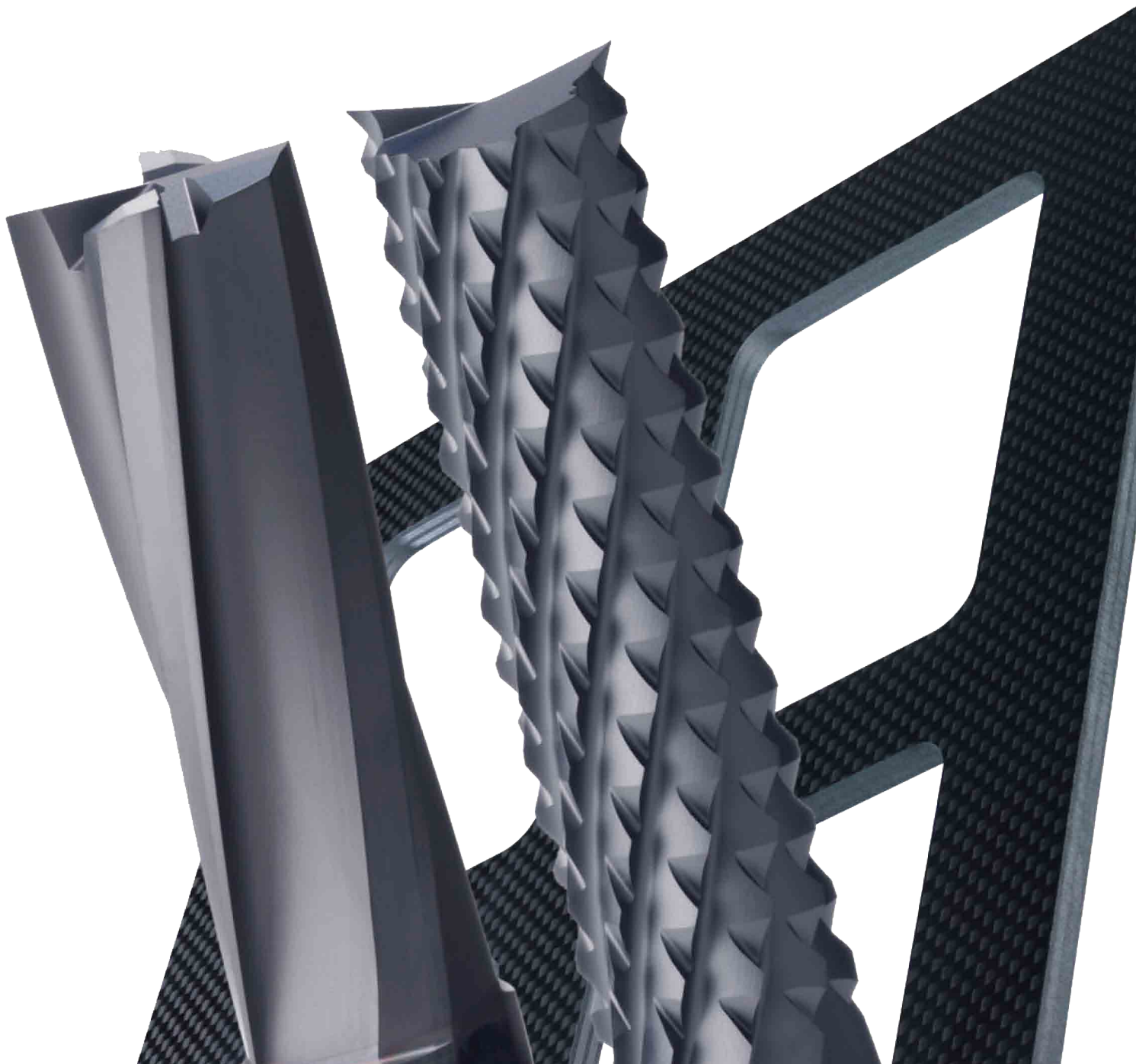


# ***DFC Series***

**End mills for high quality CFRP machining.**



# CVD diamond coating with outstanding abrasion resistance and superior sharpness for high quality CFRP machining.

CVD diamond coated end mill for CFRP machining

## DFC Series

### Geometry for CFRP machining

#### DFC4JC

■ For finishing (First recommendation)

The low resistance cutting edge with low helix angle reduces delamination and burrs when machining CFRP.



#### DFCJRT

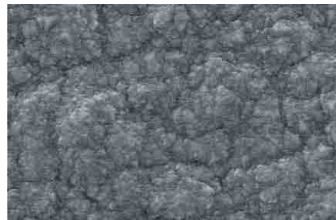
■ For efficient machining

The cross-nick type cutting edge allows high efficiency machining due to lower cutting resistance and reduced temperatures.

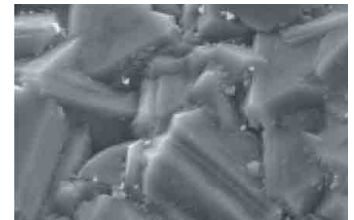
### Proprietary CVD diamond coating

■ CVD diamond coating surface comparison

The newly developed CVD diamond coated carbide material achieves outstanding abrasion resistance and smoothness due to a proprietary fine multilayer diamond crystal control technology.



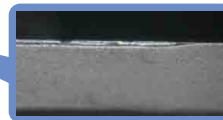
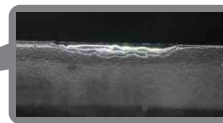
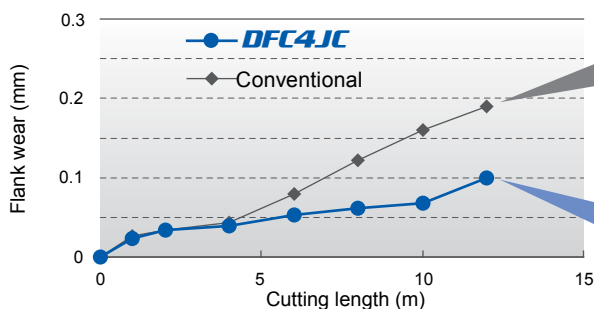
New coating grade



Conventional

#### ● Tool life

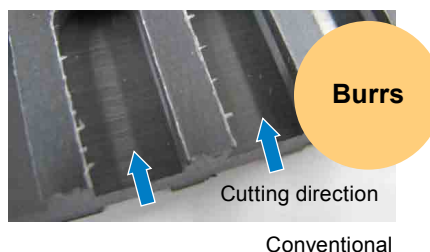
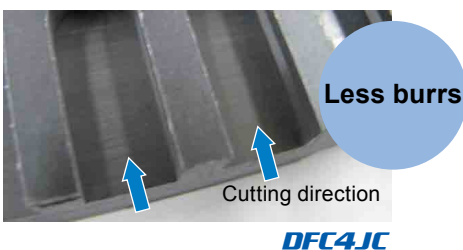
Long tool life



End mill	DFC4JCD1000 (ø10)
Work material	CFRP (Thick : 5.3mm)
Revolution	6400min <sup>-1</sup> (200m/min)
Feed rate	800mm/min (0.03mm/tooth)
Cutting fluid	Air blow

#### ● Burr comparison

Excellent surface finish



End mill	DFC4JCD1000 (ø10)
Work material	CFRP (Thick : 6mm)
Revolution	6000min <sup>-1</sup> (188m/min)
Feed rate	750mm/min (0.03mm/tooth)
Cutting fluid	Air blow

# CVD diamond coated end mill for CFRP machining

## DFC4JC

End mill, Semi long cut length, 4 flute

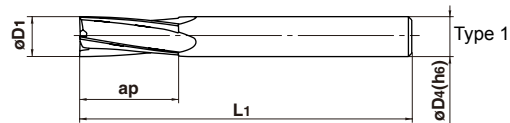


0 -- -0.03



D4 = 6 0 -- -0.008  
 8 ≤ D4 ≤ 10 0 -- -0.009  
 D4 = 12 0 -- -0.011

CFRP



● 4 flute end mill with CVD diamond coating for CFRP machining.

Order Number	Dia. D1	Length of Cut ap	Overall Length L1	Shank Dia. D4	No. of Flutes N	Stock	Type
DFC4JCD0600	6	20	70	6	4	★	1
D0800	8	30	80	8	4	★	1
D1000	10	30	90	10	4	★	1
D1200	12	30	100	12	4	★	1

(Note) Please contact Mitsubishi Materials for geometries and through coolant types other than standard.

### Recommended cutting conditions

Work material	CFRP	
Dia. (mm)	Revolution (min <sup>-1</sup> )	Feed rate (mm/min)
6	11000	950
8	8000	780
10	6400	700
12	5300	650

- 1) Cutting conditions may differ considerably due to the type of CFRP, the rigidity of the machine or the clamping and geometry of the workpiece. Please use the above table as a standard starting point.
- 2) When high machining accuracy is needed, or large burrs or delamination occurs, we recommend reducing the feed rate.
- 3) When the depth of cut is greater than 0.8D1, we recommend reducing the feed rate.
- 4) Please take precautions against dust.

★: Inventory maintained in Japan.

# CVD diamond coated end mill for CFRP machining

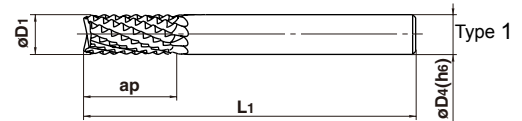
## DFCJRT

Cross-nick type end mill, Semi long cut length



D4 = 6 0 - -0.008  
 8 ≤ D4 ≤ 10 0 - -0.009  
 D4 = 12 0 - -0.011

CFRP



- Cross-nick type end mill with original CVD diamond coating for CFRP machining.

Order Number	Dia. D1	Length of Cut ap	Overall Length L1	Shank Dia. D4	No. of Flutes N	Stock	Type
DFCJRTO600	6	20	70	6	10	★	1
D0800	8	30	80	8	10	★	1
D1000	10	30	90	10	12	★	1
D1200	12	30	100	12	12	★	1

(Note) Please contact Mitsubishi Materials for geometries and through coolant types other than standard.

### Recommended cutting conditions

Work material	CFRP	
Dia. (mm)	Revolution (min <sup>-1</sup> )	Feed rate (mm/min)
6	11000	1200
8	8000	1000
10	6400	900
12	5300	850

- 1) Cutting conditions may differ considerably due to the type of CFRP, the rigidity of the machine or the clamping and geometry of the workpiece. Please use the above table as a standard starting point.
- 2) When high machining accuracy is needed or large burrs or delamination occurs, we recommend reducing the feed rate.
- 3) When the depth of cut is greater than 0.8D1, we recommend reducing the feed rate.
- 4) Please take precautions against dust.



[www.mitsubishicarbide.com](http://www.mitsubishicarbide.com)

**MMC HARTMETALL GmbH**  
 Comeniusstr. 2, 40670 Meerbusch, Germany  
 Tel. +49-2159-91890 Fax +49-2159-918966  
 e-mail admin@mmchg.de

**MITSUBISHI MATERIALS ESPAÑA, S.A.**  
 Calle Emperador 2, 46136 Museros, Valencia, Spain  
 Tel. +34-96-144-1711 Fax +34-96-144-3786  
 e-mail mme@mmevalencia.com

**MMC HARDMETAL OOO LTD.**  
 ul. Bolschaya Semenovskaya 11, bld. 5, 107023 Moscow, Russia  
 Tel. +7-495-72558-85 Fax +7-495-98139-73  
 e-mail: info@mmc-carbide.ru

**MMC HARDMETAL U.K. LTD.**  
 Mitsubishi House, Galena Close, Amington Heights, Tamworth. B77 4AS, U.K.  
 Tel. +44-1827-312312 Fax +44-1827-312314  
 e-mail sales@mitsubishicarbide.co.uk

**MMC ITALIA S.R.L.**  
 Viale delle Industrie 2, 20020 Arese (Mi) Italy  
 Tel. +39-02-93-77-03-1 Fax +39-02-93-58-90-93  
 e-mail info@mmc-italia.it

**MMC METAL FRANCE S.A.R.L.**  
 6, rue Jacques Monod, 91400 Orsay, France  
 Tel. +33-1-69-35-53-53 Fax +33-1-69-35-53-50  
 e-mail mmfsales@mmc-metal-france.fr

**MMC HARDMETAL POLAND SP. z o.o.**  
 Al. Armii Krajowej 61, 40-541 Wroclaw, Poland  
 Tel. +48-71-335-16-20 Fax +48-71-335-16-21  
 e-mail sales@mitsubishicarbide.com.pl